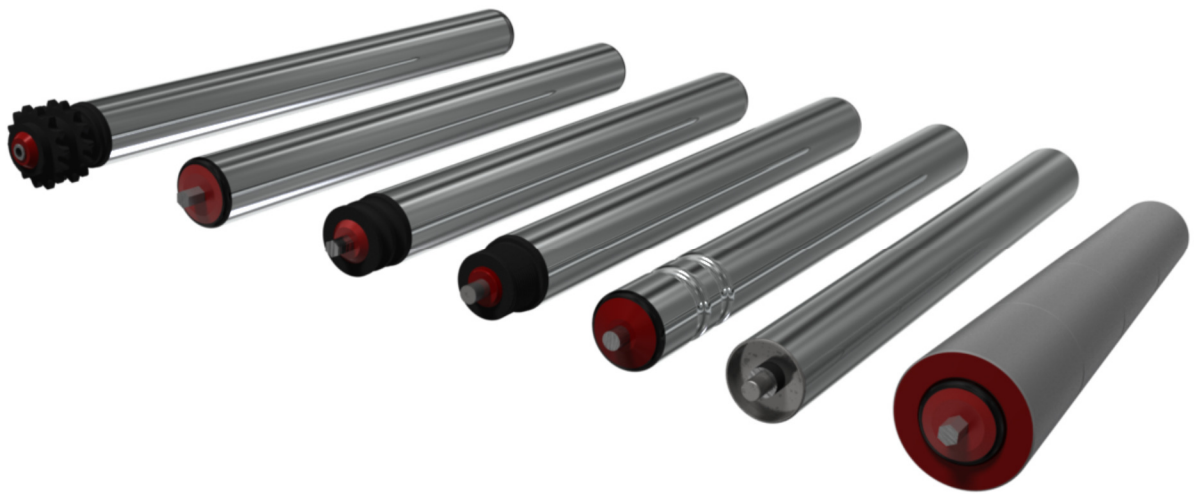


# CONVEYOR LOGISTICS

## *PRODUCT OVERVIEW*



## **CONVEYOR ROLLERS**

[www.conveyorlogistics.com.au](http://www.conveyorlogistics.com.au)

[sales@conveyorlogistics.com.au](mailto:sales@conveyorlogistics.com.au)



## INTRODUCTION

*Conveyor Logistics offers a wide range of conveyor rollers. From light duty PVC rollers to heavy duty pallet handling conveyor rollers.*

*Our most common rollers are documented in this overview however, if the roller you are after is not shown, please contact us and we will provide further information upon your request.*

*Multiple driving variations of our conveyor rollers include: O ring, Poly V, Grooved & Sprocket.*

*2mm PVC Sleeving is available on request for additional friction between the roller and conveyed product.*

*We offer tapered or twin conveyor rollers for your curve conveying applications.*

*We can custom design conveyor rollers to suit your specific application.*

*Available in various materials: Zinc Plated Mild Steel, Stainless Steel and PVC.*

*Our conveyor rollers are practically maintenance free meaning you are not required to grease or oil the bearings at specific intervals over the life time of the roller.*

*This is achieved through the use of quality sealed bearing and housing components, maximizing to keep any intrusive substances out.*

## LOAD CHART

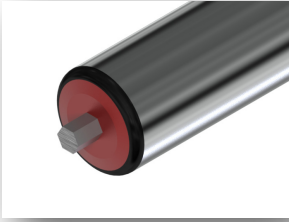
D (TUBE DIA)	SHAFT OPTION	TUBE MATERIAL		LENGTH								
				200	400	600	800	1000	1200	1400	1600	1800
25 x 1.0	SPRING LOADED	MILD STEEL	L O A D	40	40	25	12	8	-	-	-	-
38 x 1.2	SPRING LOADED	MILD STEEL		120	120	100	60	35	25	20	-	-
50 x 1.5	SPRING LOADED	MILD STEEL		140	140	140	140	110	80	60	40	-
60 x 2.0	SPRING LOADED	MILD STEEL		140	140	140	140	140	140	120	90	80
76 x 3.0	SPRING LOADED	MILD STEEL	K G	250	250	250	200	150	100	100	100	100
89 x 3.0	SPRING LOADED	MILD STEEL		430	430	430	430	430	430	400	350	300

*Note! Load factors are nominal and must not be exceeded.*

*For further information and special applications please contact Conveyor Logistics.*



## ROLLER OVERVIEW

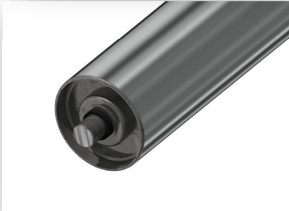


**GRP Series - Precision Bearings - Polymer Endcap**

**Diameter: Ø38 - Ø50 - Ø60**

**Shaft: Ø10 - Ø12 - 11 Hexagon (11mm Across Flats)**

**Material: ZP Steel - PVC - Stainless Steel**

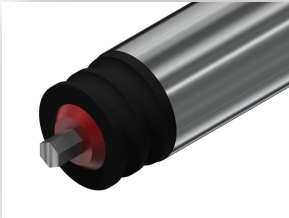


**GRS Series - Semi Precision Bearings / Precision Bearings - Steel Endcap**

**Diameter: Ø25 - Ø38 - Ø50 - Ø60 - Ø76 - Ø89**

**Shaft: Ø8 - Ø10 - Ø12 - Ø15 - Ø20 - 11 Hexagon (11mm Across Flats)**

**Material: ZP Steel - Stainless Steel**



**PGO Series - Precision Bearings - Poly O Ring Groove Endcap**

**Diameter: Ø50 - R5 Grooves**

**Shaft: Ø12 - 11 Hexagon (11mm Across Flats)**

**Material: ZP Steel - PVC - Stainless Steel**



**PGV Series - Precision Bearings - Poly Vee Groove Endcap**

**Diameter: Ø50 - 'J' Pitch Poly Vee Grooves**

**Shaft: Ø12 - 11 Hexagon (11mm Across Flats)**

**Material: ZP Steel - PVC - Stainless Steel**

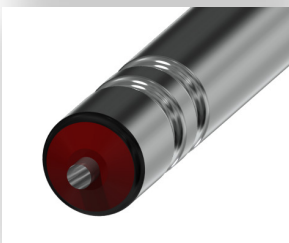


**SP1 & SP2 Series - Precision Bearings**

**Diameter: Ø50 - Ø60 - Ø76 - Ø89 - Single or Double - Steel or Poly Sprocket**

**Shaft: Ø10 - Ø12 - Ø15 - Ø20 - 11 Hexagon (11mm Across Flats)**

**Material: ZP Steel - PVC - Stainless Steel**

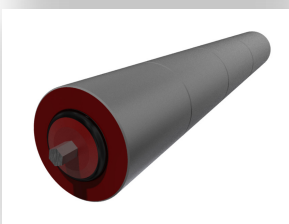


**TG1 & TG2 Series - Precision Bearings - Polymer Endcap**

**Diameter: Ø38 - Ø50 - Ø60 - Single or Double Grooves**

**Shaft: Ø10 - Ø12 - 11 Hexagon (11mm Across Flats)**

**Material: ZP Steel - PVC - Stainless Steel**



**Taper Series - Precision Bearings - Polymer Endcap**

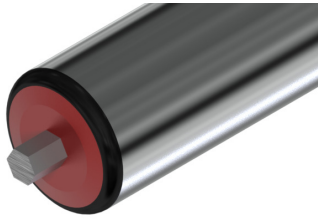
**Diameter: Ø50 - c/w PVC Conical Taper Sleeves for Curve Conveyors**

**Shaft: Ø10 - Ø12 - 11 Hexagon (11mm Across Flats)**

**Material: ZP Steel - Stainless Steel**



## GRP SERIES



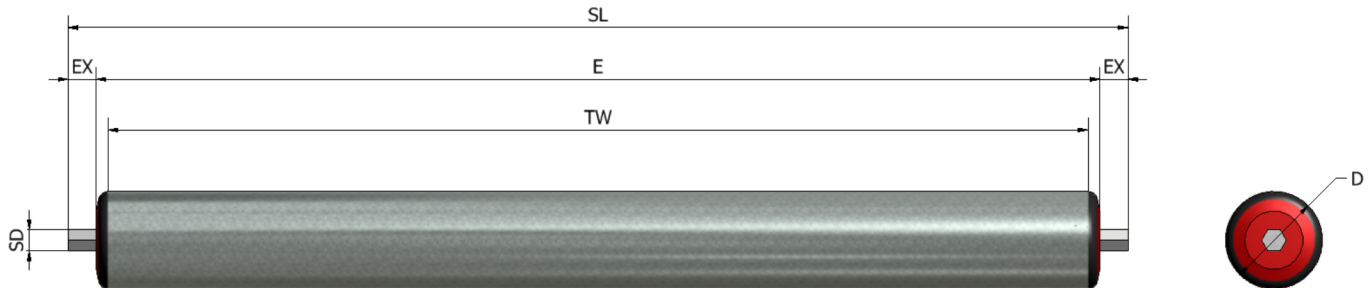
### GRP Series Rollers

Suitable for free running gravity conveyors and high speed powered conveyor applications

Roller maximum lineal speed: 120 meters per min (m/min)

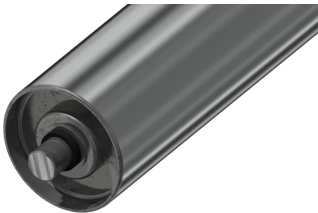
Operating temperatures: -5 °C to 40 °C

Capacity: 120kg (nom.) Refer to load chart



D	SD	TUBE MATERIAL	SHAFT MATERIAL	SL	TW	E
38 x 1.2	10 / 12 / 11 HEX	ZINC PLATED STEEL / STAINLESS STEEL	STEEL / STAINLESS STEEL	SL = E + EX + EX	TW = E - 20	SPECIFY LENGTH
50 x 1.5	10 / 12 / 15 / 11 HEX	ZINC PLATED STEEL / STAINLESS STEEL / PVC	STEEL / STAINLESS STEEL	SL = E + EX + EX	TW = E - 20	SPECIFY LENGTH
60 x 2.0	10 / 12 / 15 / 11 HEX	ZINC PLATED STEEL / STAINLESS STEEL	STEEL / STAINLESS STEEL	SL = E + EX + EX	TW = E - 20	SPECIFY LENGTH

## GRS SERIES



### GRS Series Rollers

Suitable for free running medium to heavy duty gravity conveyors

Roller maximum lineal speed: 40 meters per min (m/min)

Operating temperatures: -5 °C to 40 °C

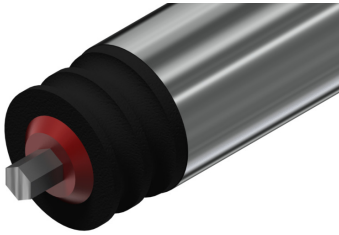
Capacity: 20kg up to 400kg (nom.) Refer to load chart



D Ø	SD Ø	TUBE MATERIAL	SHAFT MATERIAL	SL	TW	E
25 x 1.0	8	ZINC PLATED STEEL / STAINLESS STEEL	STEEL / STAINLESS STEEL	SL = E + EX + EX	TW = E - 6	SPECIFY LENGTH
38 x 1.2	10 / 12 / 11 HEX	ZINC PLATED STEEL / STAINLESS STEEL / PVC	STEEL / STAINLESS STEEL	SL = E + EX + EX	TW = E - 20	SPECIFY LENGTH
50 x 1.5	10 / 12 / 15 / 11 HEX	ZINC PLATED STEEL / STAINLESS STEEL / PVC	STEEL / STAINLESS STEEL	SL = E + EX + EX	TW = E - 20	SPECIFY LENGTH
60 x 2.0	12 / 15 / 11 HEX	ZINC PLATED STEEL / STAINLESS STEEL	STEEL / STAINLESS STEEL	SL = E + EX + EX	TW = E - 20	SPECIFY LENGTH
76 x 3.0	15 / 20	ZINC PLATED STEEL / STAINLESS STEEL	STEEL / STAINLESS STEEL	SL = E + EX + EX	TW = E - 20	SPECIFY LENGTH
89 x 3.0	15 / 20 / 25	ZINC PLATED STEEL / STAINLESS STEEL	STEEL / STAINLESS STEEL	SL = E + EX + EX	TW = E - 20	SPECIFY LENGTH



## PGO SERIES



### PGO Series Rollers

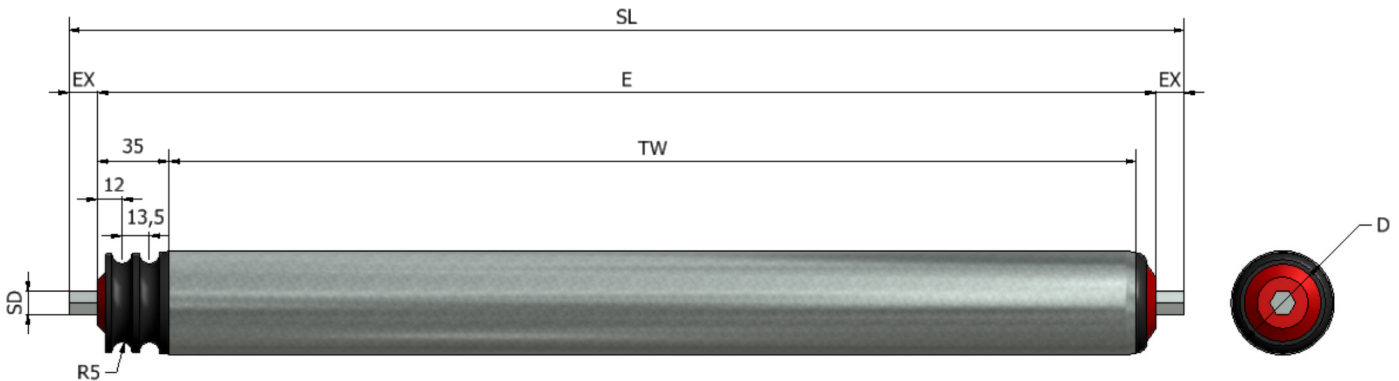
Suitable for powered roller conveyors, ZPA and high speed powered conveyor

Applications - Suit Ø5mm O-Ring drive bands.

Roller maximum lineal speed: 120 meters per min (m/min)

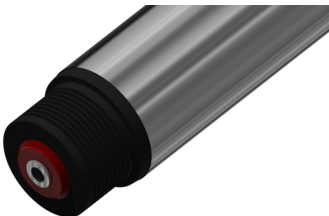
Operating temperatures: -5 °C to 40 °C

Capacity: 120kg (nom.) Refer to load chart



D	SD	TUBE MATERIAL	SHAFT MATERIAL	SL	TW	E
50 x 1.5	12 / 11 HEX	ZINC PLATED STEEL / STAINLESS STEEL / PVC	STEEL / STAINLESS STEEL	SL = E + EX + EX	TW = E - 45	SPECIFY LENGTH

## PGV SERIES



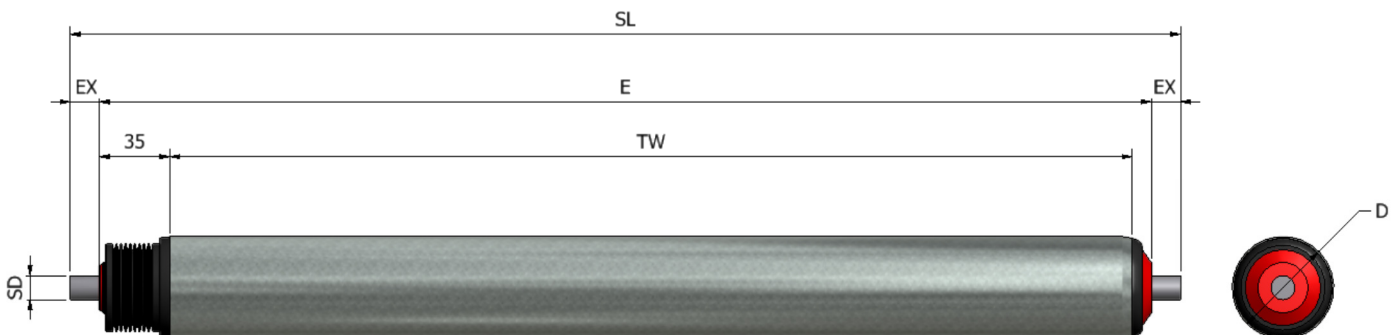
### PGV Series Rollers

Suitable for incline / decline, high torque powered roller conveyors, ZPA and high speed powered conveyor applications - 9 x J Pitch Poly Vee Grooves

Roller maximum lineal speed: 120 meters per min (m/min)

Operating temperatures: -5 °C to 40 °C

Capacity: 120kg (nom.) Refer to load chart



D	SD	TUBE MATERIAL	SHAFT MATERIAL	SL	TW	E
50 x 1.5	12 / 11 HEX	ZINC PLATED STEEL / STAINLESS STEEL / PVC	STEEL / STAINLESS STEEL	SL = E + EX + EX	TW = E - 45	SPECIFY LENGTH



## SP SERIES



### SP1 & SP2 Series Rollers

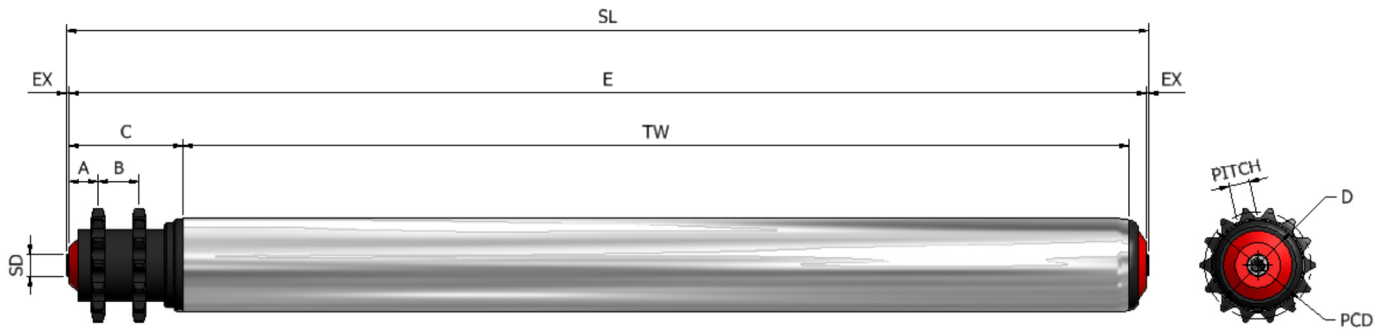
*Suitable for medium / heavy duty powered roller conveyors, positive drive or Friction Accumulation conveyors*

*Applications - Various chain pitches available*

*Roller maximum lineal speed: 9 to 40 meters per min (m/min)*

*Single or Double Polymer or steel Sprockets*

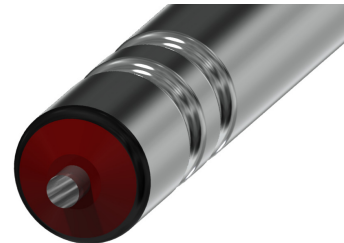
*Operating temperatures: -5 °C to 40 °C - Capacity: 120kg (nom.) Refer to load chart*



For sprocket data, please contact Conveyor Logistics.

D	SD	TUBE MATERIAL	SHAFT MATERIAL	SL	TW	E
50 x 1.5	10/ 12 / 15 / 11 HEX	ZINC PLATED STEEL / STAINLESS STEEL / PVC	STEEL / STAINLESS STEEL	SL = E + EX + EX	TW = E - 71	SPECIFY LENGTH
60 x 2.0	10/ 12 / 15 / 11 HEX	ZINC PLATED STEEL / STAINLESS STEEL / PVC	STEEL / STAINLESS STEEL	SL = E + EX + EX	TW = E - 71	SPECIFY LENGTH
76 x 3.0	15 / 20	ZINC PLATED STEEL / STAINLESS STEEL	STEEL / STAINLESS STEEL	SL = E + EX + EX	TBC	SPECIFY LENGTH
89 x 3.0	15 / 20 / 25	ZINC PLATED STEEL / STAINLESS STEEL	STEEL / STAINLESS STEEL	SL = E + EX + EX	TBC	SPECIFY LENGTH

## TG SERIES



### TG1 & TG2 Series Rollers

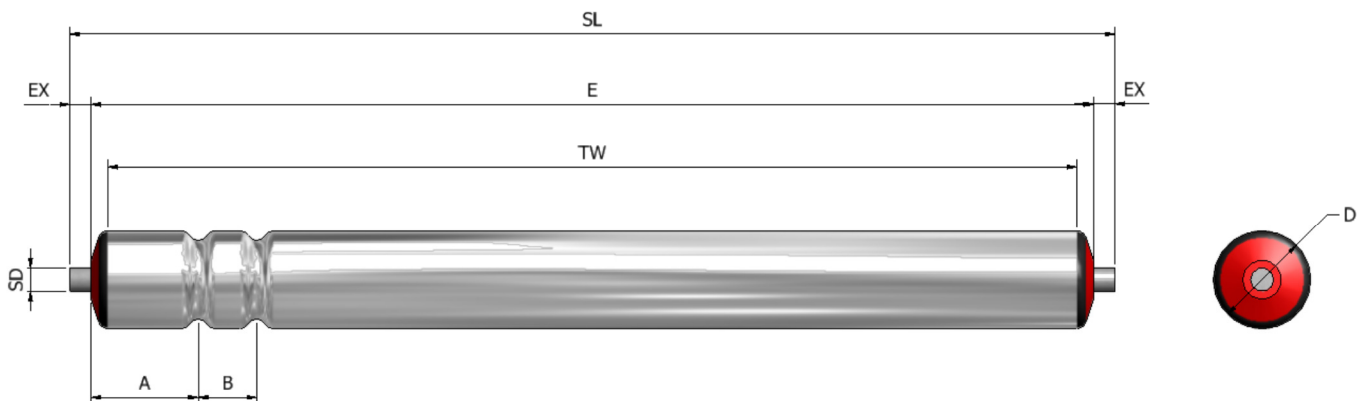
*Suitable for light duty powered roller conveyors, Line shaft or ZPA conveyor*

*Applications - Suit Ø5mm O-Ring drive bands.*

*Roller maximum lineal speed: 120 meters per min (m/min)*

*Operating temperatures: -5 °C to 40 °C*

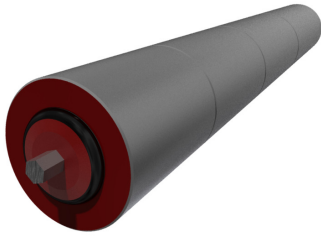
*Capacity: 120 kg (nom.) Refer to load chart*



38 x 1.2	10 / 12 / 11 HEX	ZINC PLATED STEEL / STAINLESS STEEL / PVC	STEEL / STAINLESS STEEL	SL = E + EX + EX	TW = E - 20	SPECIFY LENGTH
50 x 1.5	10 / 12 / 15 / 11 HEX	ZINC PLATED STEEL / STAINLESS STEEL / PVC	STEEL / STAINLESS STEEL	SL = E + EX + EX	TW = E - 20	SPECIFY LENGTH
60 x 2.0	12 / 15 / 11 HEX	ZINC PLATED STEEL / STAINLESS STEEL	STEEL / STAINLESS STEEL	SL = E + EX + EX	TW = E - 20	SPECIFY LENGTH



## TAPER SERIES



### Taper Series Rollers

*Suitable for light / medium duty powered curve roller conveyors*

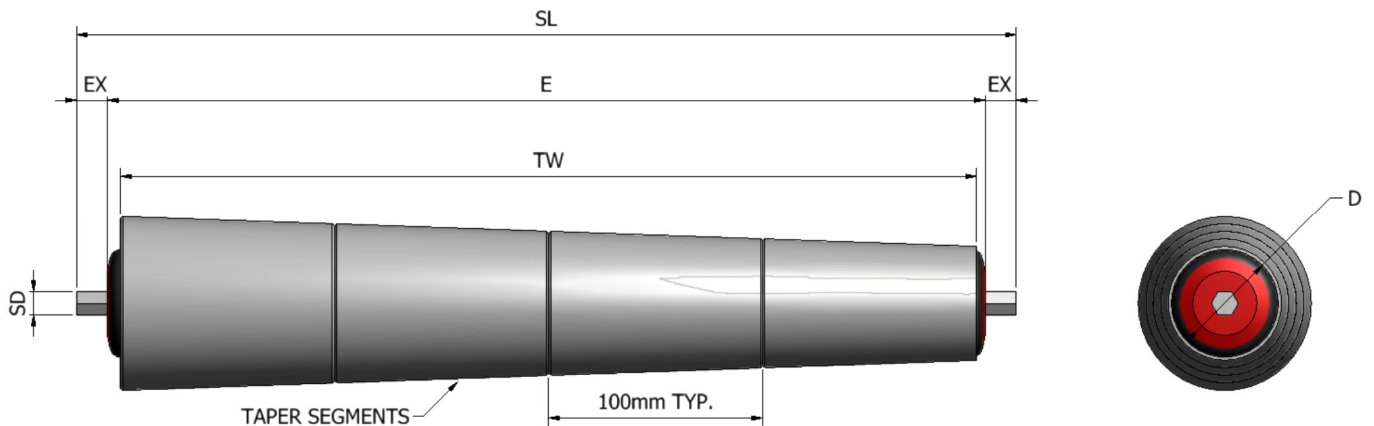
*Applications - Available on all of our Ø50mm series rollers*

*Based on Ø50mm Roller with Conical Taper Segments*

*Roller maximum lineal speed: 120 meters per min (m/min)*

*Operating temperatures: -5 °C to 40 °C*

*Capacity: 50kg (nom.)*

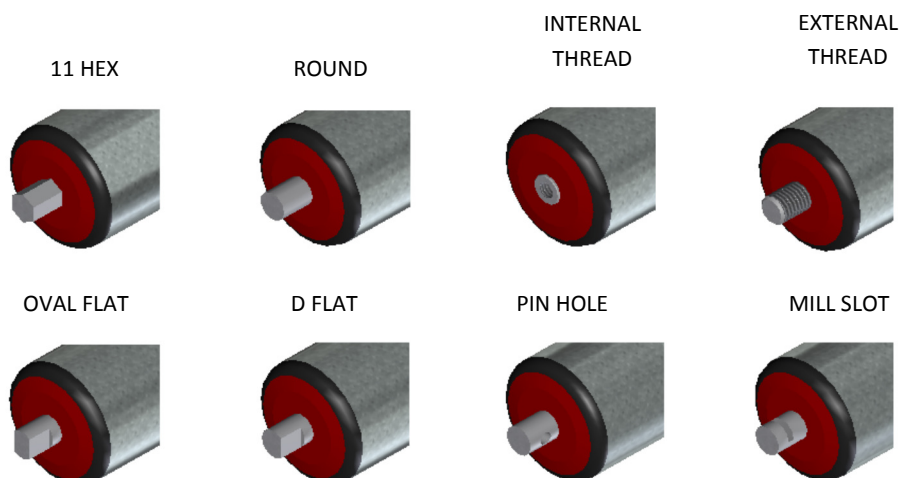


D	SD	TUBE MATERIAL	SHAFT MATERIAL	SL	TW	E
50 x 1.5	10 / 12 / 15 / 11 HEX	ZINC PLATED STEEL / STAINLESS STEEL / PVC	STEEL / STAINLESS STEEL	SL = E + EX + EX	TW = E - 20	SPECIFY LENGTH

## SHAFT OPTIONS (All Rollers)

*Shaft options can be customized to suit your specific application.*

*We offer spring loaded, fixed or loose shafts in our conveyor rollers.*



For any inquiries please contact: [sales@conveyorlogistics.com.au](mailto:sales@conveyorlogistics.com.au)  
Or call +03 8548 3866

NOTES

.....

.....

.....

.....

.....

.....

.....

.....

.....

.....

.....

.....

.....

.....

.....

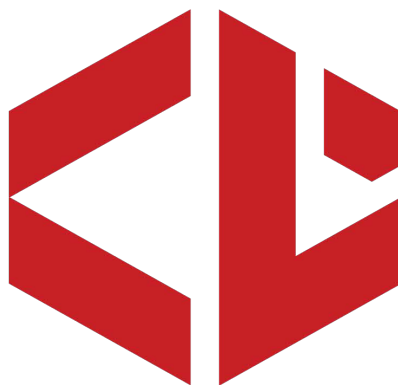
.....

.....

.....

.....

.....



**CONVEYOR LOGISTICS**